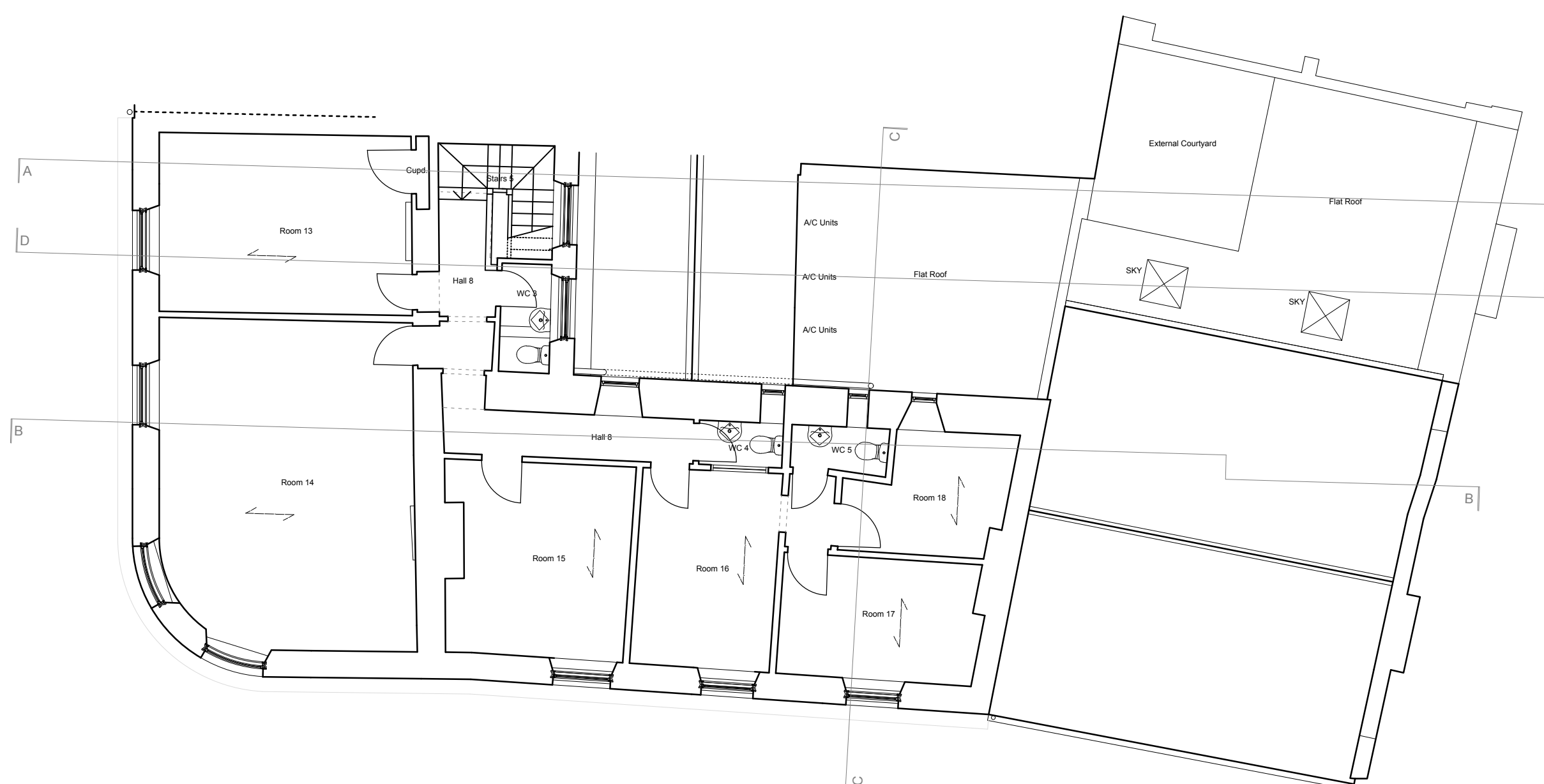


Project name 1 to 3 Battle Hill Hexham		
Date Dec 2021	Drawn by TOM	Scale 1:100 / A1
Job no 1387	Drawing no PE03	Rev -

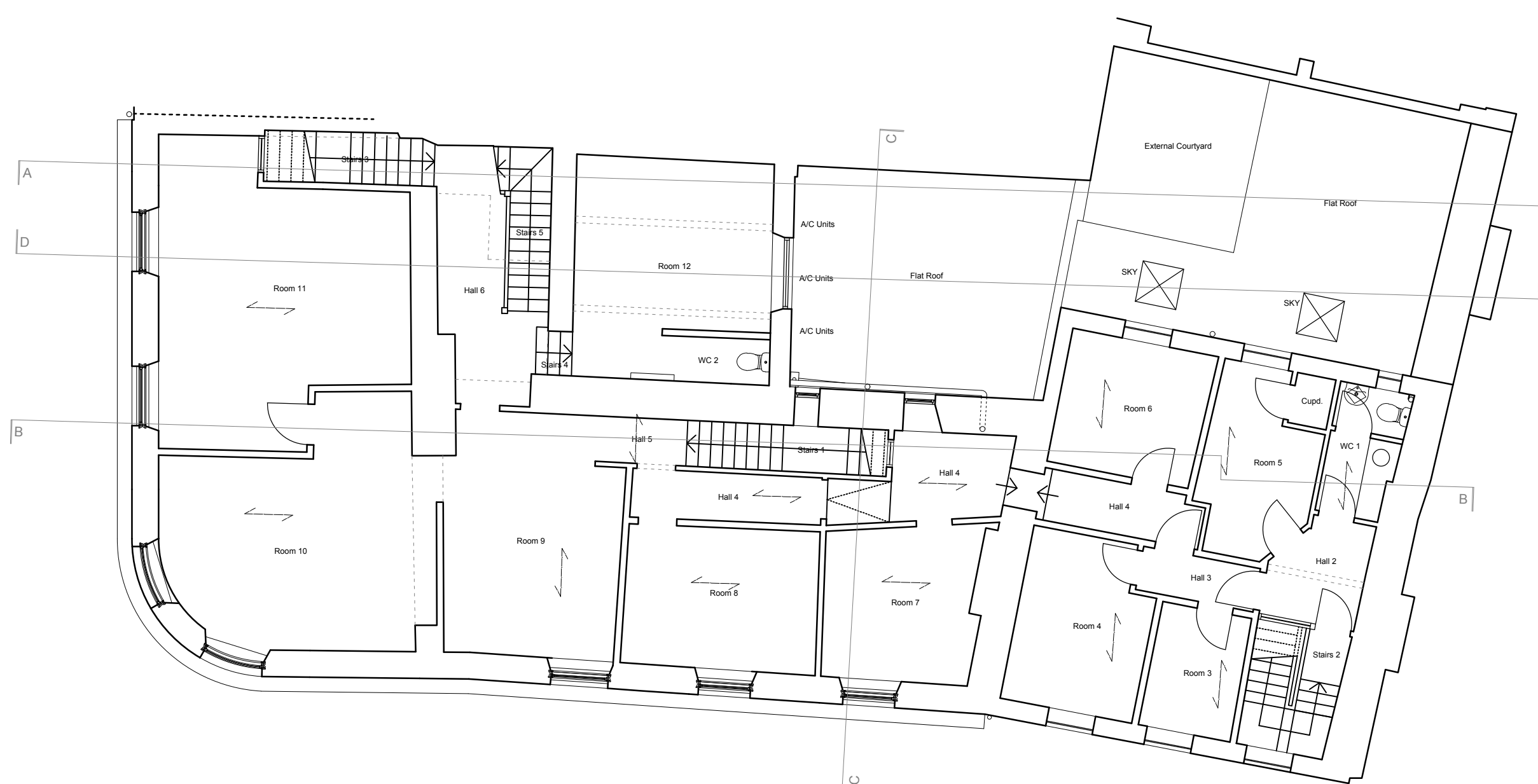
For
Graham Chambers

Drawing title
Existing Floor Plans

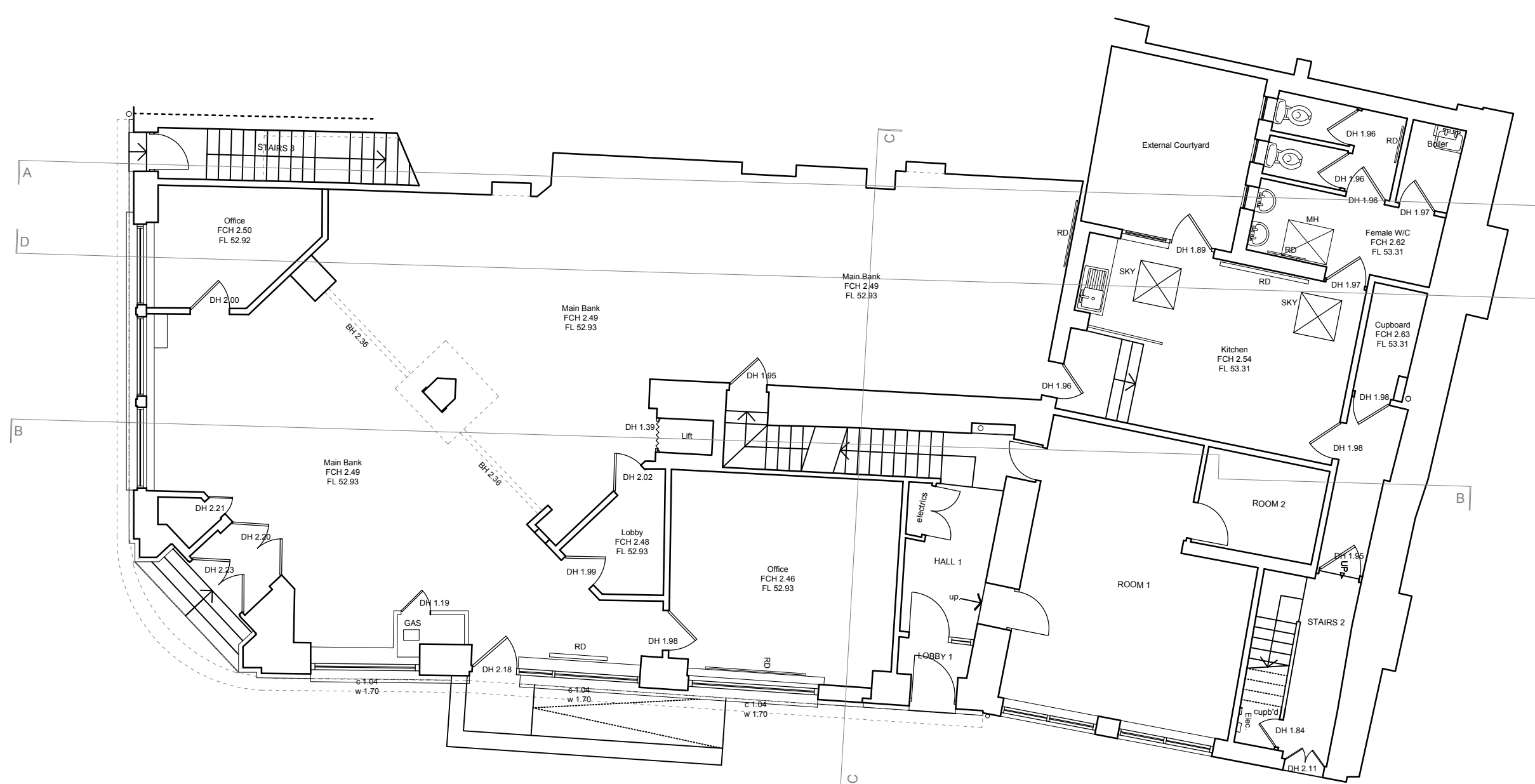
Discrepancies, ambiguities and/or omissions between this drawing and information given elsewhere must be reported to the architect before proceeding.
This drawing is copyright.
Dimensions must be checked on site.
Do not scale off dimensions from this drawing.



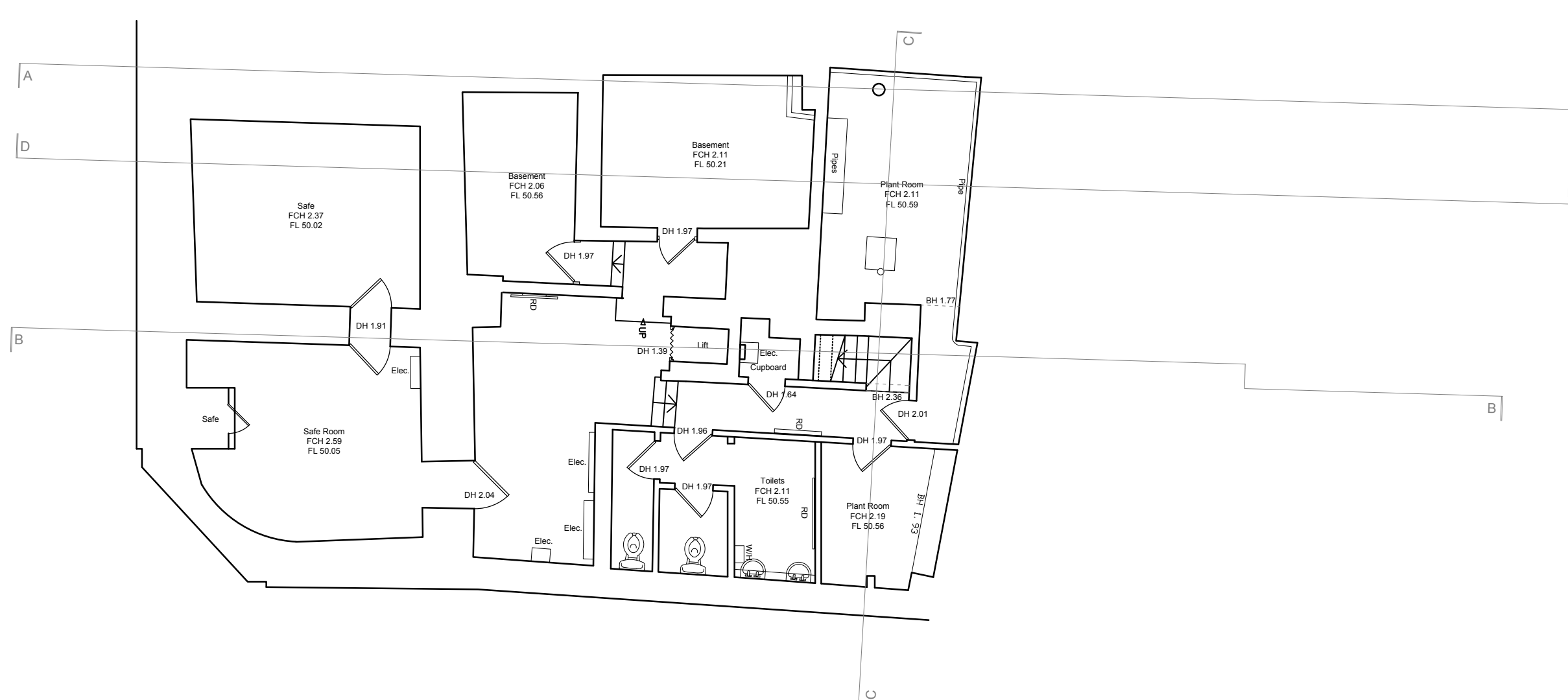
Second Floor Plan



First Floor Plan



Ground Floor Plan



Basement Floor Plan